

Directions

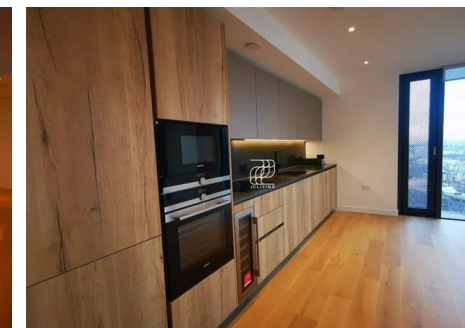
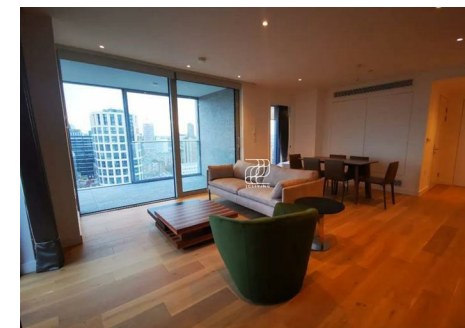
Viewings

Viewings by arrangement only. Call 02033696888 to make an appointment.

EPC Rating

B

| Energy Efficiency Rating | | Current | Potential |
|---|--|-------------------------|-----------|
| Very energy efficient - lower running costs | | | |
| (92 plus) A | | | |
| (81-91) B | | 87 | 87 |
| (69-80) C | | | |
| (55-68) D | | | |
| (39-54) E | | | |
| (21-38) F | | | |
| (1-20) G | | | |
| Not energy efficient - higher running costs | | | |
| England & Wales | | EU Directive 2002/91/EC | |



CN09 Flat 20.01, Makers Building 1 Jasper Walk, London, N1 7TW

£992 Per Week

Makers Building 1 Jasper Walk, London N1 7TW

*** Please quote reference JC230623 when contacting the office ***

Welcome to this charming flat located in the prestigious Makers Building in London. This delightful property features a well-designed layout, offering one reception room that provides a warm and inviting space for relaxation and entertaining. The flat boasts two comfortable bedrooms, perfect for accommodating family or guests, along with two modern bathrooms that ensure convenience and privacy.

The Makers Building is known for its excellent location, providing easy access to the vibrant culture and amenities that London has to offer. Residents can enjoy nearby shops, restaurants, and parks, making it an ideal choice for those who appreciate city living.

This flat presents a wonderful opportunity for anyone looking to settle in a dynamic area of London, whether you are a first-time buyer or seeking a rental property. With its appealing features and prime location, this flat is sure to attract interest. Don't miss the chance to make this lovely property your new home.



Council Tax Band: F

